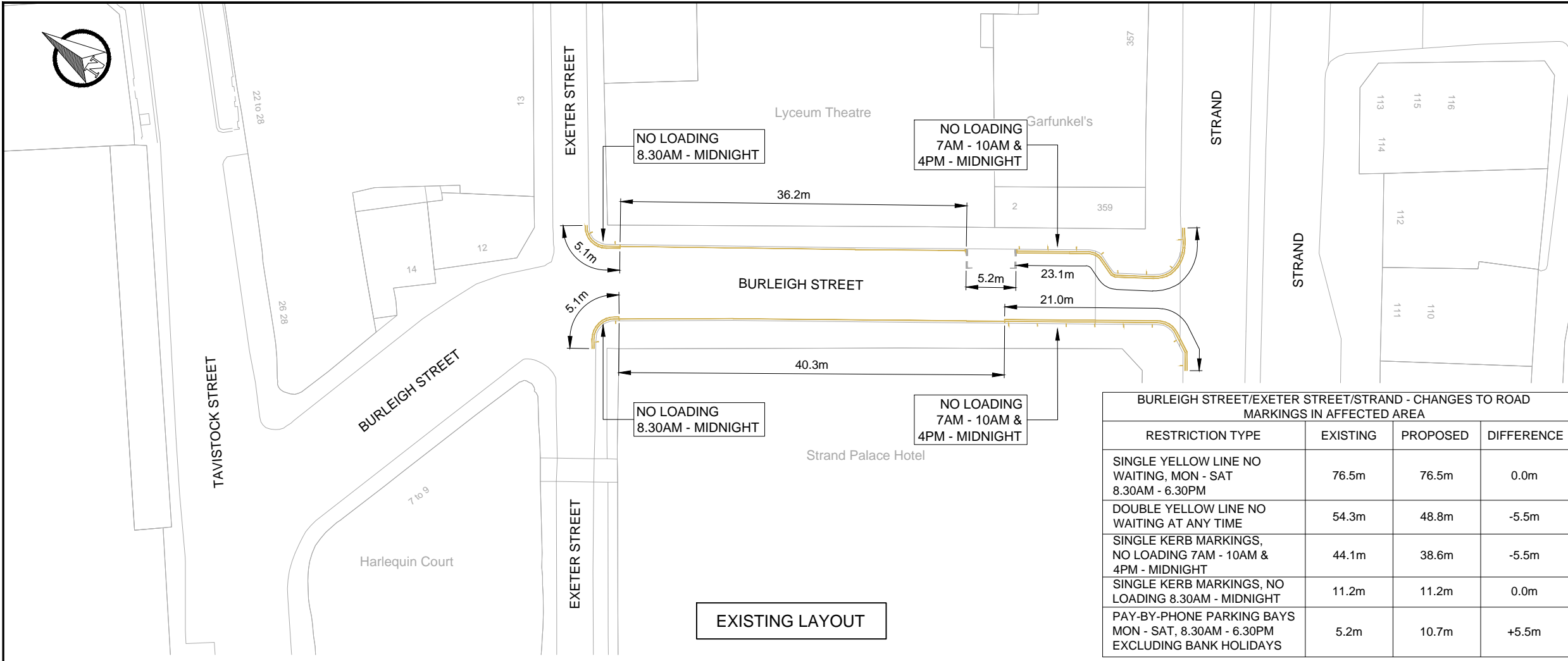
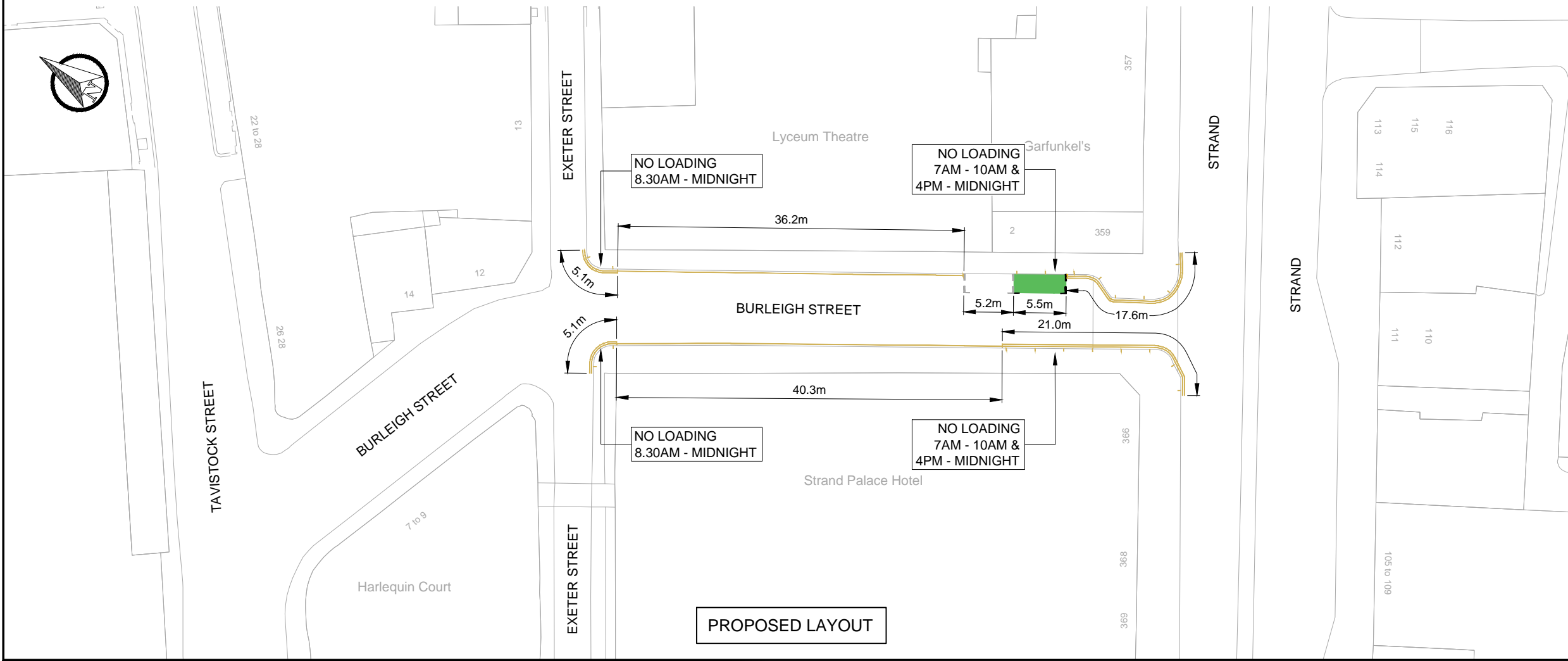


T:\11677201 BR13779 W41208394 Wellington_Catherine_Russell Street\11 Drawings & Photos\Drawings\PHASE 2 NEW\Initial Design\11677201-02-TMO-04.dwg 27 Jan, 2015 - 1:49pm



KEY

- PAY BY PHONE PARKING
- EXISTING YELLOW LINE
- PROPOSED YELLOW LINE



B	27.01.2015	JO	AMENDMENTS TO RESTRICTIONS TABLE	PJ	CB
A	22.10.2014	PAD	INITIAL ISSUE	CDS	CB

DRAWING STATUS: **CONSULTATION**

25 Mandela Way, London, SE1 5SZ
www.tmcconway.co.uk www.wspgroup.com

City of Westminster
SAFE STREETS
City Commissioner of Transportation

PROJECT: WELLINGTON STREET PUBLIC REALM SCHEME

TITLE: PROPOSED LOCATION FOR PAY-BY-PHONE BAY TMO LAYOUT - SHEET 4 OF 4

SCALE @ A3	DATE	DESIGN/DRAWN	CHECKED	APPROVED	SHT
1:500	21-10-2104	JO/PAD	CDS	CB	A3
JOB No.	BRIEF/DSB No.			REV.	
11677201	BR 13779			B	
DRAWING No.				REV.	
11677201-02-TMO-04				B	